



Sensors > Position Sensors > Potentiometer Sensors > Cable Actuated Position Sensors



Position Sensor Product Type: **SP Series, String Pots**

Full Stroke Range: **101.6 – 1270 mm [ 4 – 50 in ]**

Output Signal Type: **Voltage Divider (Potentiometric)**

Accuracy: **±.25 % of FS**

Repeatability: **.02 % of FS**

## Features

### Product Type Features

Position Sensor Product Type	SP Series, String Pots
------------------------------	------------------------

### Body Features

Case Material	Polycarbonate + Stainless Mounting Bracket
---------------	--

### Dimensions

Full Stroke Range	101.6 – 1270 mm[4 – 50 in]
-------------------	----------------------------

### Usage Conditions

Accuracy	±.25 % of FS
Operating Temperature Range	-40 – 71 °C[-40 – 160 °F]

### Operation/Application

Output Signal Type	Voltage Divider (Potentiometric)
--------------------	----------------------------------

### Industry Standards

IP Rating	IP50
Hazardous Area Approval	No

### Other

Repeatability	.02 % of FS
Encoder Drive	No
Measuring Cable	Nylon-Coated Stainless Steel



## Product Compliance

For compliance documentation, visit the product page on TE.com>

EU RoHS Directive 2011/65/EU	Compliant with Exemptions
EU ELV Directive 2000/53/EC	Compliant with Exemptions
China RoHS 2 Directive MIIT Order No 32, 2016	Restricted Materials Above Threshold
EU REACH Regulation (EC) No. 1907/2006	Current ECHA Candidate List: JUNE 2024 (241) Candidate List Declared Against: JUNE 2023 (235) SVHC > Threshold: Pb (3% in Component part) <b>Article Safe Usage Statements:</b> Do not eat, drink or smoke when using this product. Wash thoroughly after handling. Recycle if possible and dispose of the article by following all applicable governmental regulations relevant to your geographic location.
Halogen Content	Not Yet Reviewed for halogen content
Solder Process Capability	Not reviewed for solder process capability

### Product Compliance Disclaimer

This information is provided based on reasonable inquiry of our suppliers and represents our current actual knowledge based on the information they provided. This information is subject to change. The part numbers that TE has identified as EU RoHS compliant have a maximum concentration of 0.1% by weight in homogenous materials for lead, hexavalent chromium, mercury, PBB, PBDE, DBP, BBP, DEHP, DIBP, and 0.01% for cadmium, or qualify for an exemption to these limits as defined in the Annexes of Directive 2011/65/EU (RoHS2). Finished electrical and electronic equipment products will be CE marked as required by Directive 2011/65/EU. Components may not be CE marked. Additionally, the part numbers that TE has identified as EU ELV compliant have a maximum concentration of 0.1% by weight in homogenous materials for lead, hexavalent chromium, and mercury, and 0.01% for cadmium, or qualify for an exemption to these limits as defined in the Annexes of Directive 2000/53/EC (ELV). Regarding the REACH Regulation, the information TE provides on SVHC in articles for this part number is based on the latest European Chemicals Agency (ECHA) 'Guidance on requirements for substances in articles' posted at this URL: <https://echa.europa.eu/guidance-documents/guidance-on-reach>

## Compatible Parts

 <p>TE Part # SP1-25 STRING POT 25.0 INCH RANGE</p>	 <p>TE Part # SP1-4 STRING POT 4.75 INCH RANGE</p>	 <p>TE Part # SP1-12 STRING POT 12.5 INCH RANGE</p>	<p>TE Part # 9036810-0040 CONN,PLUG,STRGHT,4COND,5M,SC4</p>
--	---	--	---

## Also in the Series | MEAS SP



Cable Actuated Position Sensors(24)

## Customers Also Bought



TE Part #640550-6  
Polyester PCB Connector Covers: 2.54 mm, MTA 100



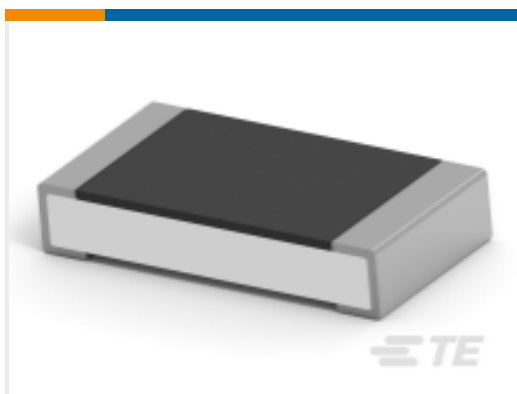
TE Part #SPD-50-3  
STRING POT 50 INCH RANGE



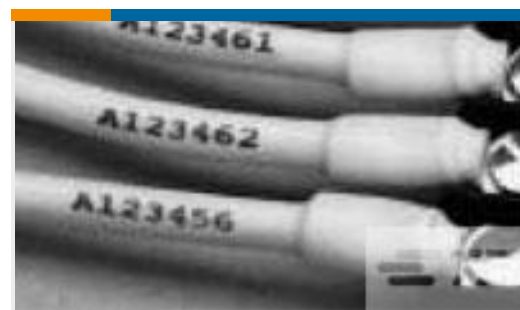
TE Part #1546413-3  
ETHERNET RJ-45 BLKHD PASSTHRU



TE Part #4-2176371-8  
RQ 0603 14K3 0.1% 10PPM 5K RL



TE Part #5-2176390-7  
RQ 1206 4K42 0.1% 10PPM 5K RL



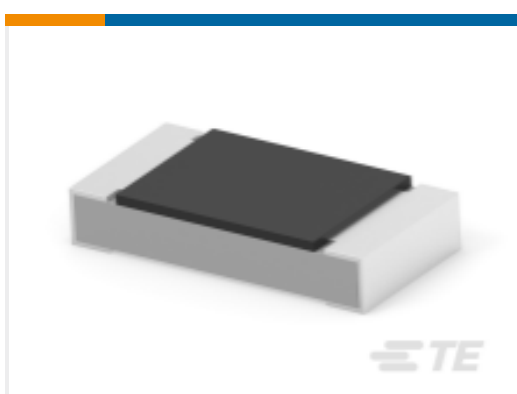
TE Part #5052842031  
RNF-100-3/64-0-STK



TE Part #36154  
PIDG R 22-16 COMM 22-18 MIL 10



TE Part #ADP-SMAM-SMAM  
SMA Plug to SMA Plug



TE Part #9-2176579-9  
RLC73K 2B R59 1% 1K RL

## Documents

### CAD Files

[3D PDF](#)

[3D](#)

### Customer View Model

[ENG\\_CVM\\_CVM\\_SP1-50\\_1.2d\\_dxf.zip](#)

English

### Customer View Model

[ENG\\_CVM\\_CVM\\_SP1-50\\_1.3d\\_igs.zip](#)



English

Customer View Model

[ENG\\_CVM\\_CVM\\_SP1-50\\_1.3d\\_stp.zip](#)

English

By downloading the CAD file I accept and agree to the [Terms and Conditions](#) of use.

---

## Datasheets & Catalog Pages

[SP1](#)

English