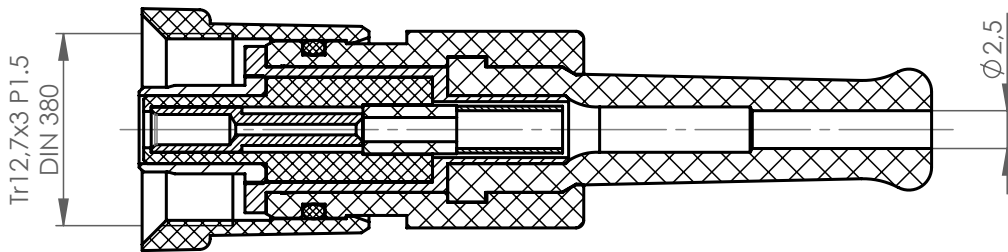


recommended starting torque: 50 Ncm ±5
 Empfohlenes Anzugsmoment: 50 Ncm ±5



Mechanical characteristics

cable group
 assembly code

Components

centre contact
 outer contact
 housing
 crimp ferrule
 insulator
 o-ring
 cable relief

Environmental

RoHS compliant

Mechanische Eigenschaften

Kabelgruppe
 Montageanleitung

Bauteile

Innenkontakt
 Außenkontakt
 Gehäuse
 Crimprohr
 Isolierung
 O-Ring
 Gummitülle

Umgebung

RoHS konform

G29: 0.45L/1.4 Bedea; G 01130 HT-03 Suhner
 B2321

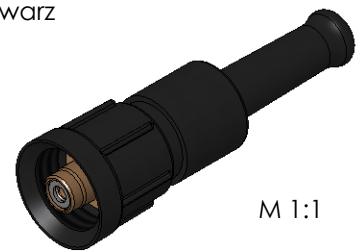
Materials / Material

CUZn39Pb3
 CUZn39Pb3
 PBT GF30% RAL 9005
 Cu
 PTFE/PVC
 NBR
 PVC black / schwarz



Finish / Oberfläche

Cu1Ni2Au0,8
 Cu1Ni2Au0,8/Cu2Ni5
 Ni5

2011/65/EU



M 1:1

Änd./ rev. / index	Änderungs-Nr. / revision code	Datum/ date	Name/ name	gez./ drawn	Datum/ date	Name/ name	Gewicht/ weight [g]
					09.01.2017	MA	
				gepr./ appr.	24.01.2017	BJ	ca./approx. 9,32
			Maßstab/ scale	Benennung/ title			
			2:1 (1:1)	pH-Straight Jack pH-Kabelbuchse			
			untol. Maße/ dim. without tolerances according to	Untert./ doc. type	Zeichnungsnr./ drawing no.		
				K	J01251A0021		
			Ersatz für/ replaces				
							
					 Maße/ dimensions: mm		
					Original : DIN A4		
					Blatt/ sheet 1 von/ of 1		